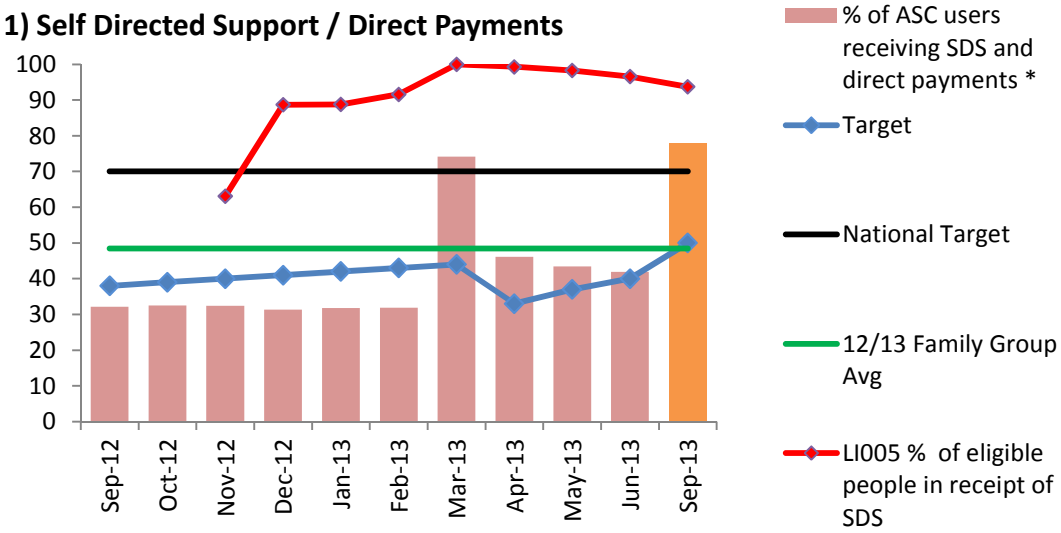
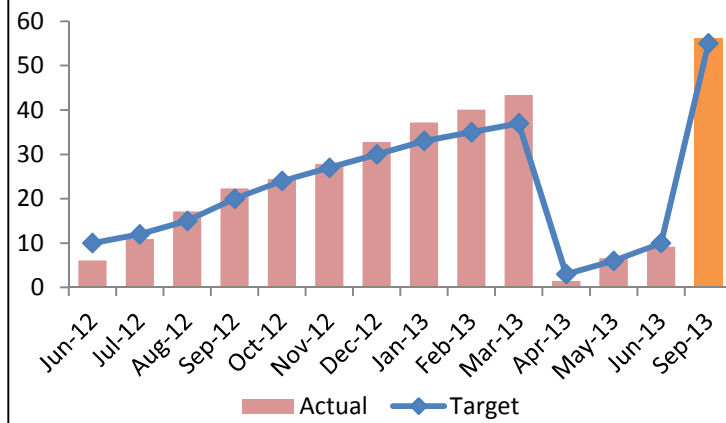


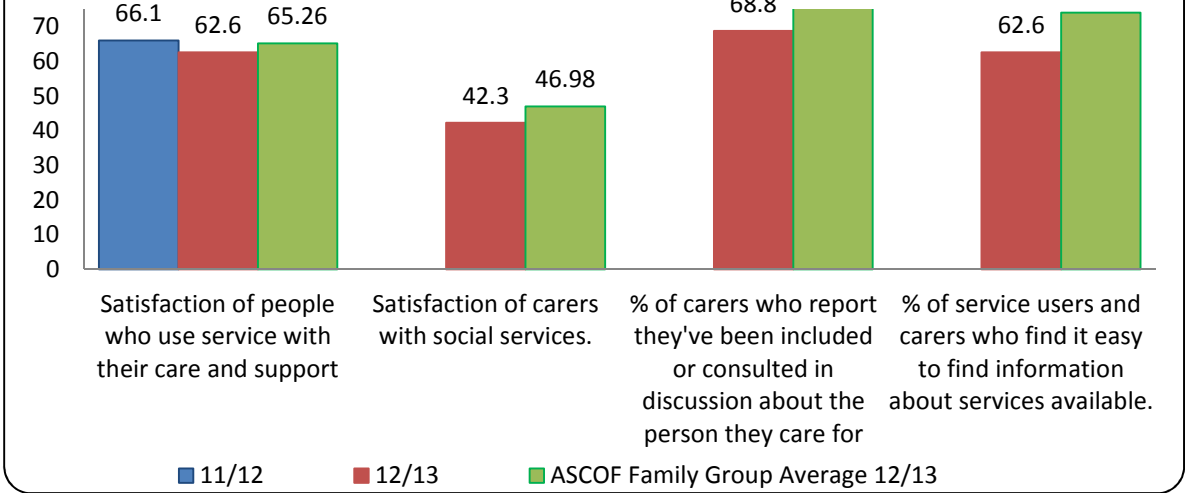
1) Self Directed Support / Direct Payments



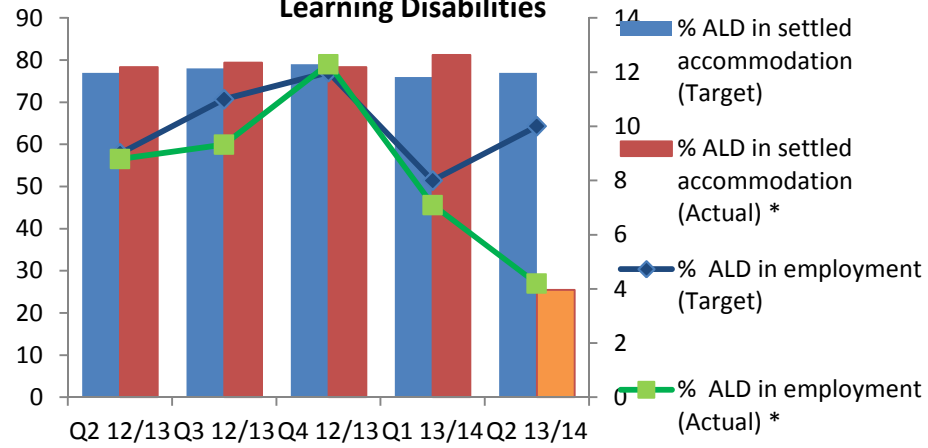
2) Local Carers receiving services following an assessment or review



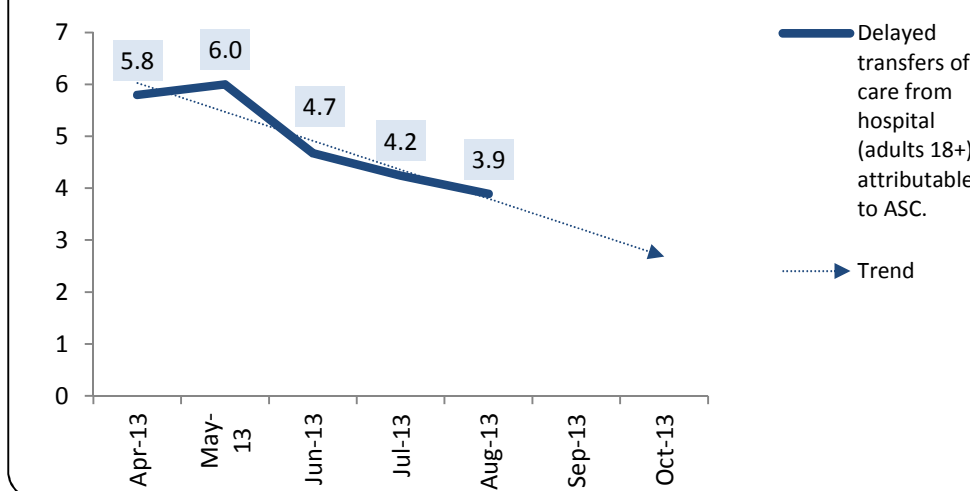
3) User and Carer Annual Survey Feedback



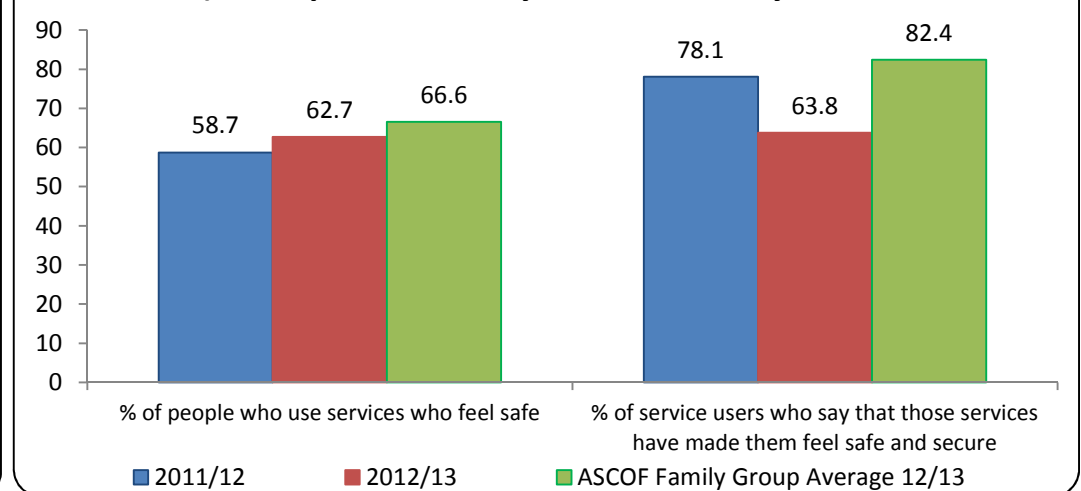
4) Employment & Settled Accommodation for Adults with Learning Disabilities



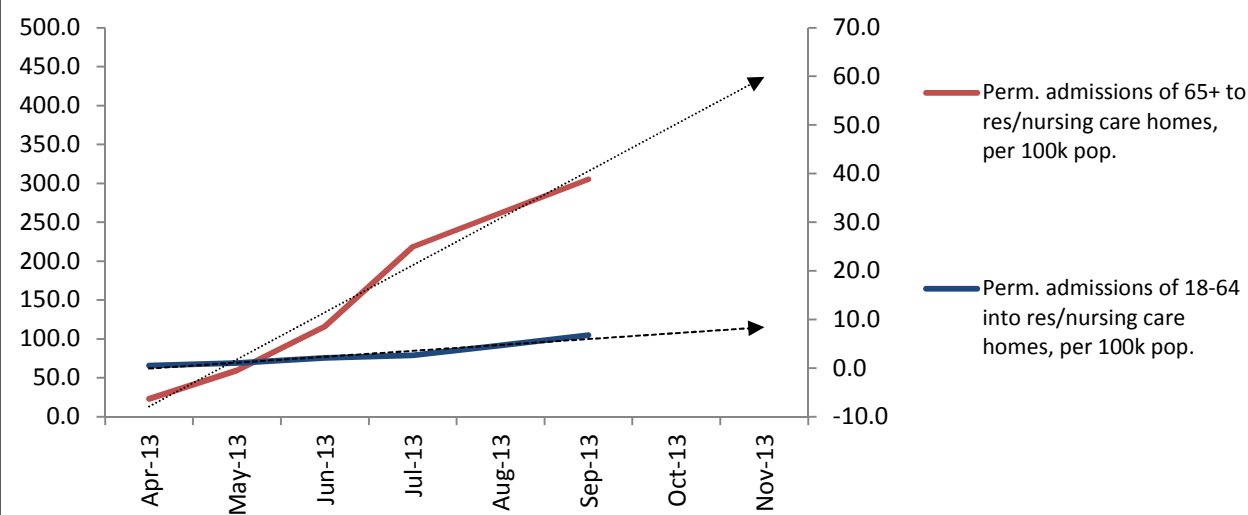
5) Hospital Discharges/Delayed Transfer of Care



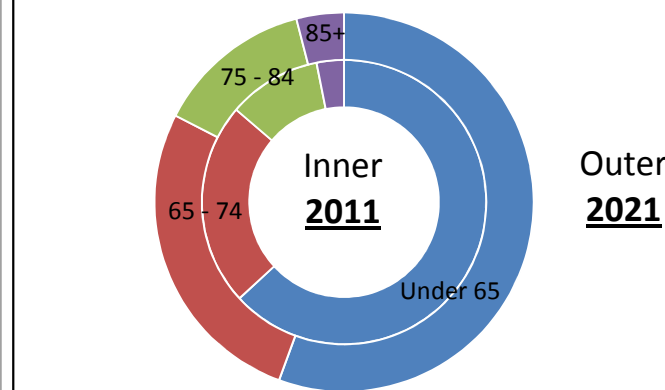
6) Perception of Safety - Annual Survey Results



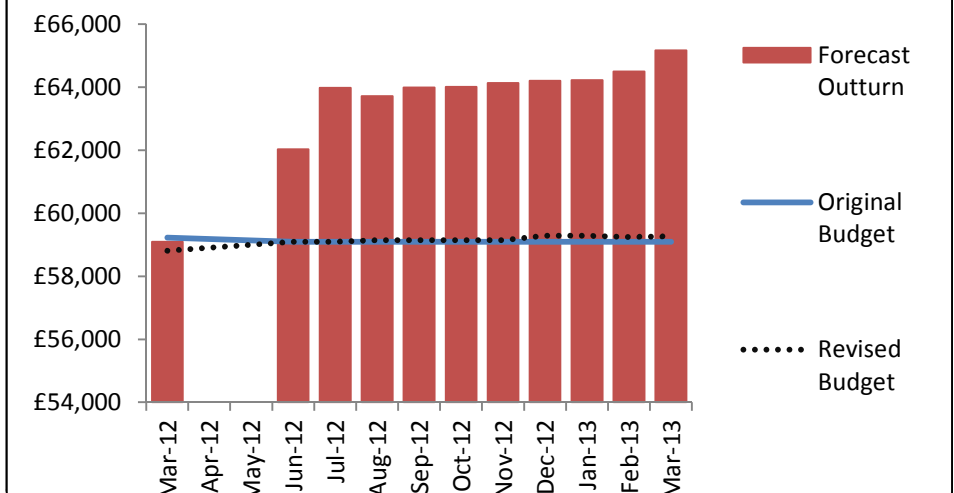
7) ASCOF2a - Permanent Residential/Nursing Care Admissions



8) Predicted Population Change 2011 - 2021 by Age Group



9) Assessment & Eligibility - Budget vs Outturn (£000's)



* Bars marked orange have changed definition in September 2013